

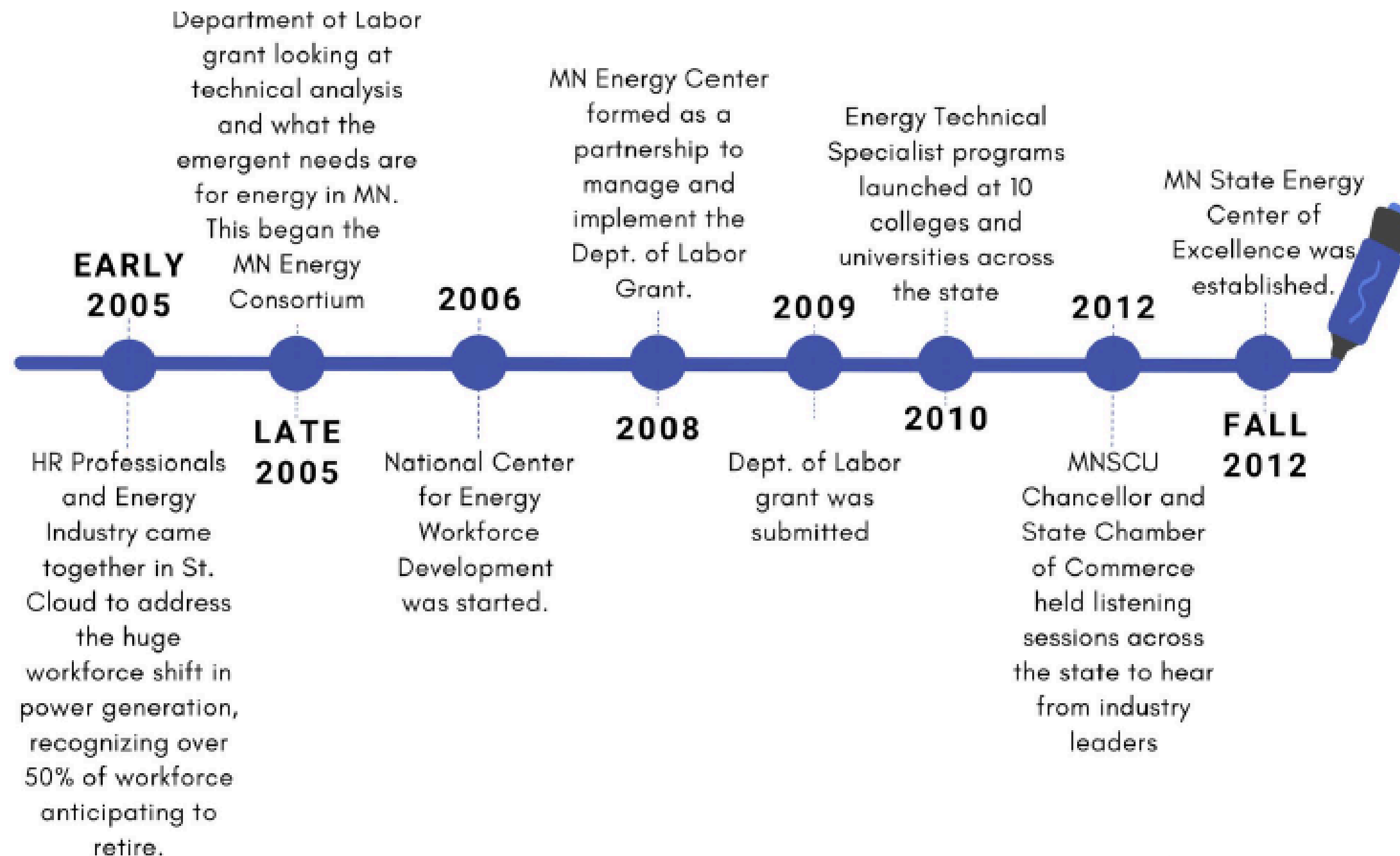
MINNESOTA'S ENERGY WORKFORCE PARTNERSHIP



MINNESOTA STATE
Energy Center of Excellence

ENERGY PARTNERS

HISTORIC CONNECTION OVERVIEW



ENERGY PARTNERS

MN STATE ENERGY CENTER OF EXCELLENCE

The Energy Center is one of eight centers of excellence established by the legislature to serve high-demand, high-wage sectors critical to the state's economy.

We aim to connect the 33 Minnesota State campuses to partners in industry, education, and government to build tomorrow's workforce through collaboration.

The eight centers share three strategic directives.



MINNESOTA STATE
Energy Center of Excellence

ENERGY PARTNERS

ENGAGING INDUSTRY.

Centers develop rich, engaged networks that inform and guide MN's future workforce, centered on the voice and expertise of sector partners and industry leaders.

ENHANCING EDUCATION.

Centers leverage industry knowledge and emerging technologies to empower our faculty and staff, providing students with an innovative and high-quality education.

INSPIRING STUDENTS.

Centers empower students by offering meaningful opportunities to explore career paths and gain the skills and knowledge needed for their chosen professions.



MINNESOTA STATE
Energy Center of Excellence

ENERGY PARTNERS

MISSION

The Energy Center will cultivate Minnesota's energy workforce in community.

VISION

The Energy Center will be the premier partner in developing energy education and workforce solutions for Minnesota.

VALUES

Empowering Equity

The Energy Center ensures all learners can access the education and tools needed to succeed in the energy workforce.

Innovation in Collaboration

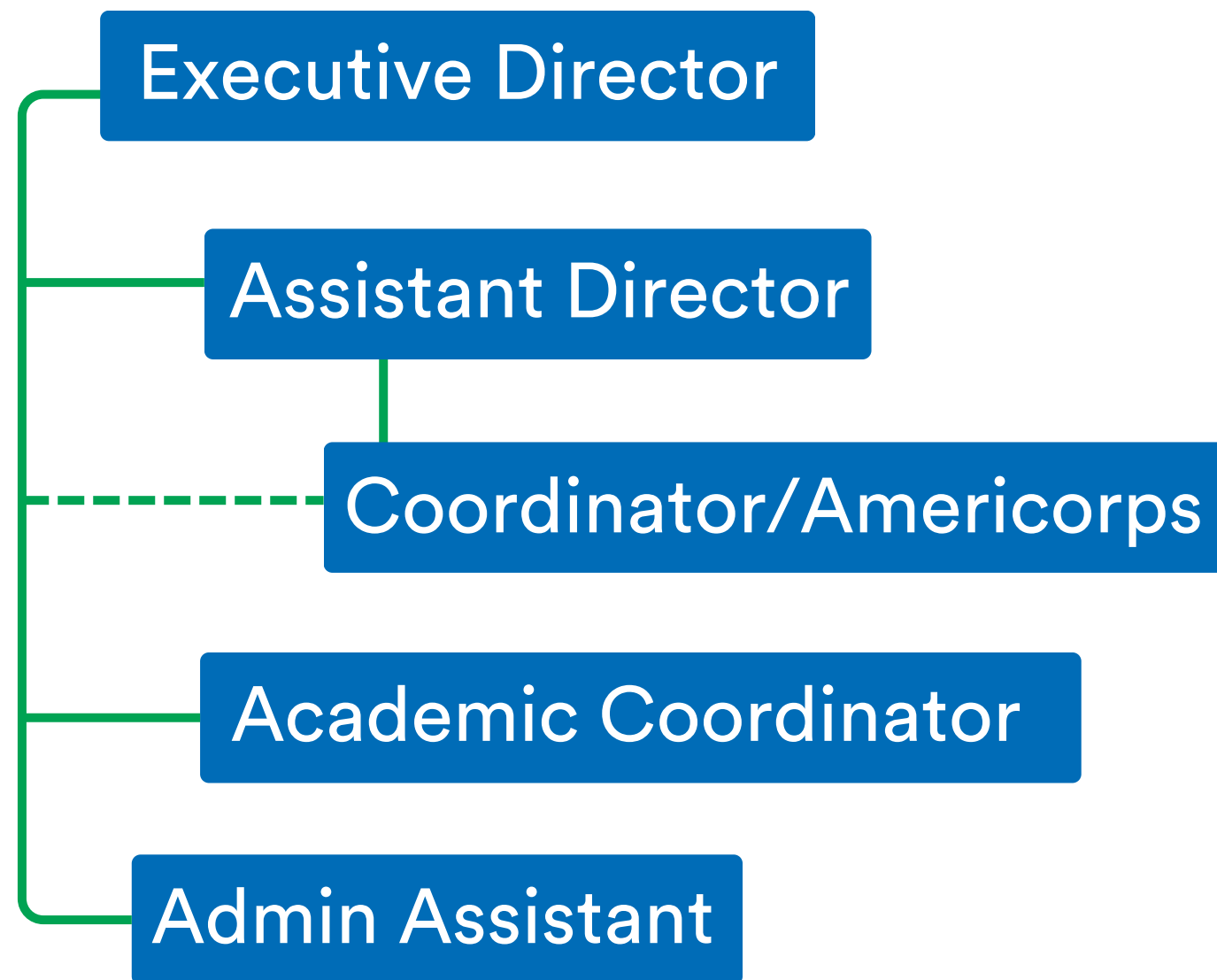
The Energy Center supports sector growth and workforce transformation through new and strategic partnerships.



MINNESOTA STATE
Energy Center of Excellence

ENERGY PARTNERS

ENERGY CENTER STRUCTURE



This staffing model can ensure that the Center remains committed to enhancing education, inspiring students, and engaging the industry.

The Executive Director is the strategic guide and lead partner for external organizations and funding efforts.

The Assistant Director is committed to the Center's community outreach through communications and events.

The Academic Coordinator is tasked with connecting K-16 educators with the resources they need to be successful.

The Coordinator/ AmeriCorps role is dedicated to specific initiatives and priorities. Currently, we have a GreenCorps in service promoting green career exploration and outreach.

ENERGY PARTNERS

MINNESOTA ENERGY CONSORTIUM

The consortium is part of the national partnership with the Center for Energy Workforce Development and provides resources and guidance to 80% of the industry nationally.

The MEC has three strategic focus areas to bolster our shared missions and build a community developing Minnesota's energy workforce. The Center will serve as a project manager for MEC programs and initiatives.



ENERGY PARTNERS

MEMBER & PROFESSIONAL DEVELOPMENT

We want to add value to the members of the Consortium through ongoing personal and professional development opportunities for industry and education professionals.

CAREER AWARENESS & ENGAGEMENT

We want to harness our community of partners to reach every corner of the state to educate about energy fundamentals and the careers they build.

WORKFORCE TRAINING & EDUCATION

We want to ensure that there are clear and accessible pathways to education and upskilling through our partners that is current, necessary, and wealth building to benefit all communities.



ENERGY PARTNERS

MPD PROGRAMS AND GOALS 2025

Establish Statewide “Employee Resource Groups”

To connect folks across the industry who share similar identities and seek connection and support.

Establish Statewide “Skills Groups”

To connect folks across the industry in similar roles to support and encourage resource sharing and collaboration amongst small teams and departments to find support

Establish a Mentorship Academy

To encourage knowledge sharing between generations of energy workers through 1:1 support and direct connections in the sector

Enroll Energy Employees in an EIF Cohort and E3 Events

To help employees and educators from across MN establish baseline knowledge for their roles supporting the industry and technical roles within it.



ENERGY PARTNERS

CAE PROGRAMS AND GOALS 2025

Establish Shared “Powering Minnesota” Campaign

To centralize career exploration resources for students and job seekers, communicating the roles and rewards of a career in the industry regardless of how you enter

Connect to students, parents, and communities across the state

To help job seekers, students, and educators understand the opportunities, skills, and science behind the electricity and fuels powering their lives through attending events

Establish an Ask an Expert List

To help students and teachers connect to professionals in the industry to explain tough concepts and careers supporting the work

Reimagine the Energy Trailer

To create a shared mobile exhibit that demonstrates the experiences, changing skills, and amazing opportunities and energy a career can offer



ENERGY PARTNERS

WTE PROGRAMS AND GOALS 2025

Support the new Energy and Natural Resources CTE cluster

To connect educators to the ENR standards, curriculum, and resources to hands-on learning development opportunities

Connect and Coordinate the ANFR and ENR CTE transition

To encourage knowledge sharing between current licensed ANFR teachers and create intuitive points of engagement with FFA, COEs, and MDE

Monitor and evaluate the EVSE program

To ensure the EVSE program is meeting industry expectations and regional needs to develop the NEVI corridors in collaboration with colleges and MnDOT

Stimulate industry participation in the Energy Careers Academy

To help develop strategic partnerships and pathways for students enrolled in the academy to meet metro employment demand and lift traditionally underrepresented communities.



ENERGY PARTNERS

MEC LEADERSHIP- APPLY HERE

Chair

Co-Chair

Industry

Education

Vice Chair

Vice Chair

Vice Chair

Member and Professional
Development

Career Awareness and
Engagement

Workforce Training and
Education

Ex-Officio

Ex-Officio

Ex-Officio

Non-Profit/Policy

Secondary Education/MDE

Trades/Unions/Contractors

Ex-Officio

Ex-Officio

Ex-Officio

DEED

MnCOMM

Post Secondary

ENERGY PARTNERS

MEC MEMBERSHIP

Members contribute to generating, transmitting, distributing, and producing electricity and fuel resources or educating, legislating, and regulating MN's energy sector.

Businesses, contractors, government agencies, non-profits, educational institutions, and everyone in between is welcome!

Email energycenter@mnwest.edu to subscribe to the listserve.

